

# How SMPng Works and Why It Doesn't Work The Way You Think

---

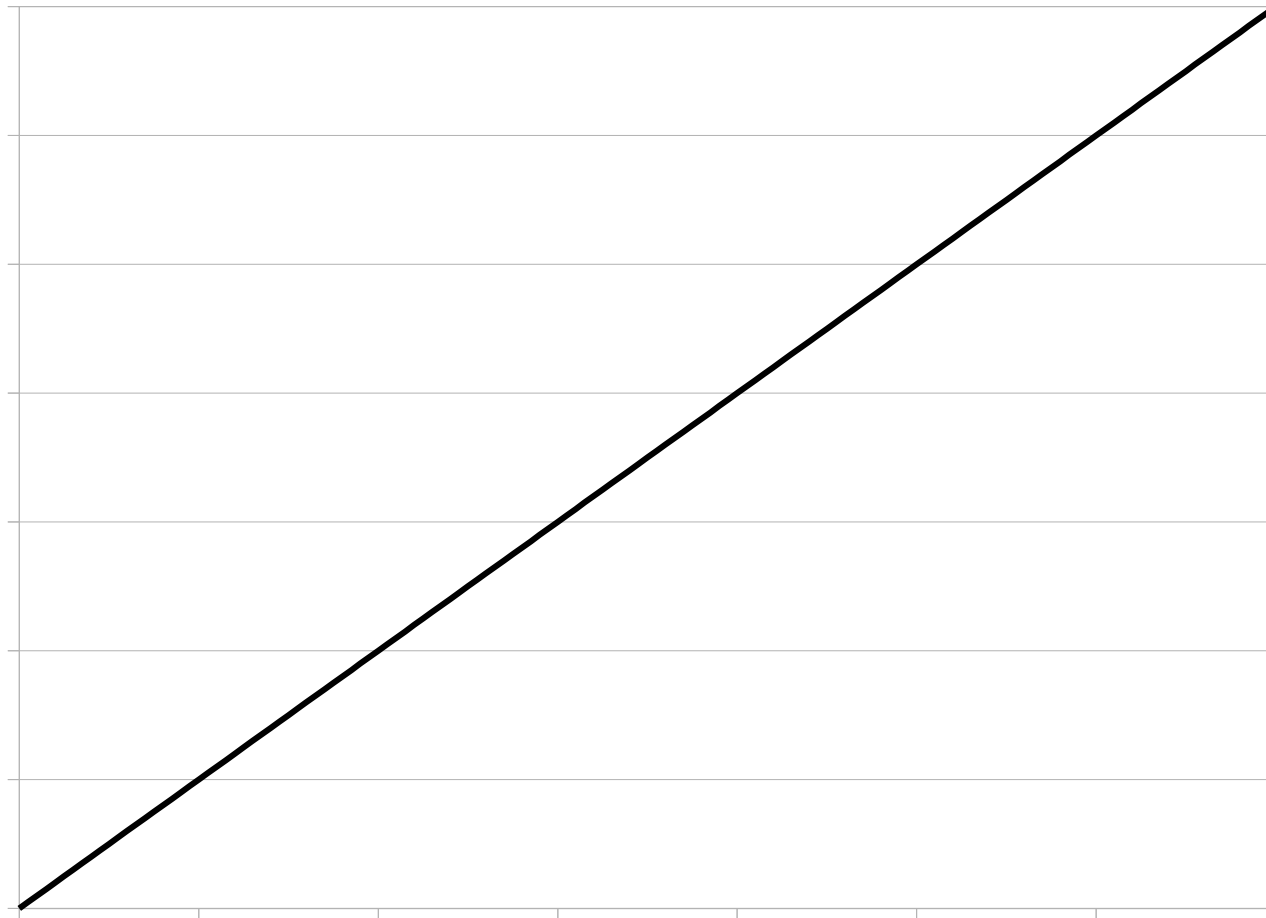
NYC\*BUG  
February 6, 2013

John Baldwin  
[jhb@FreeBSD.org](mailto:jhb@FreeBSD.org)



# Ideal SMP

---

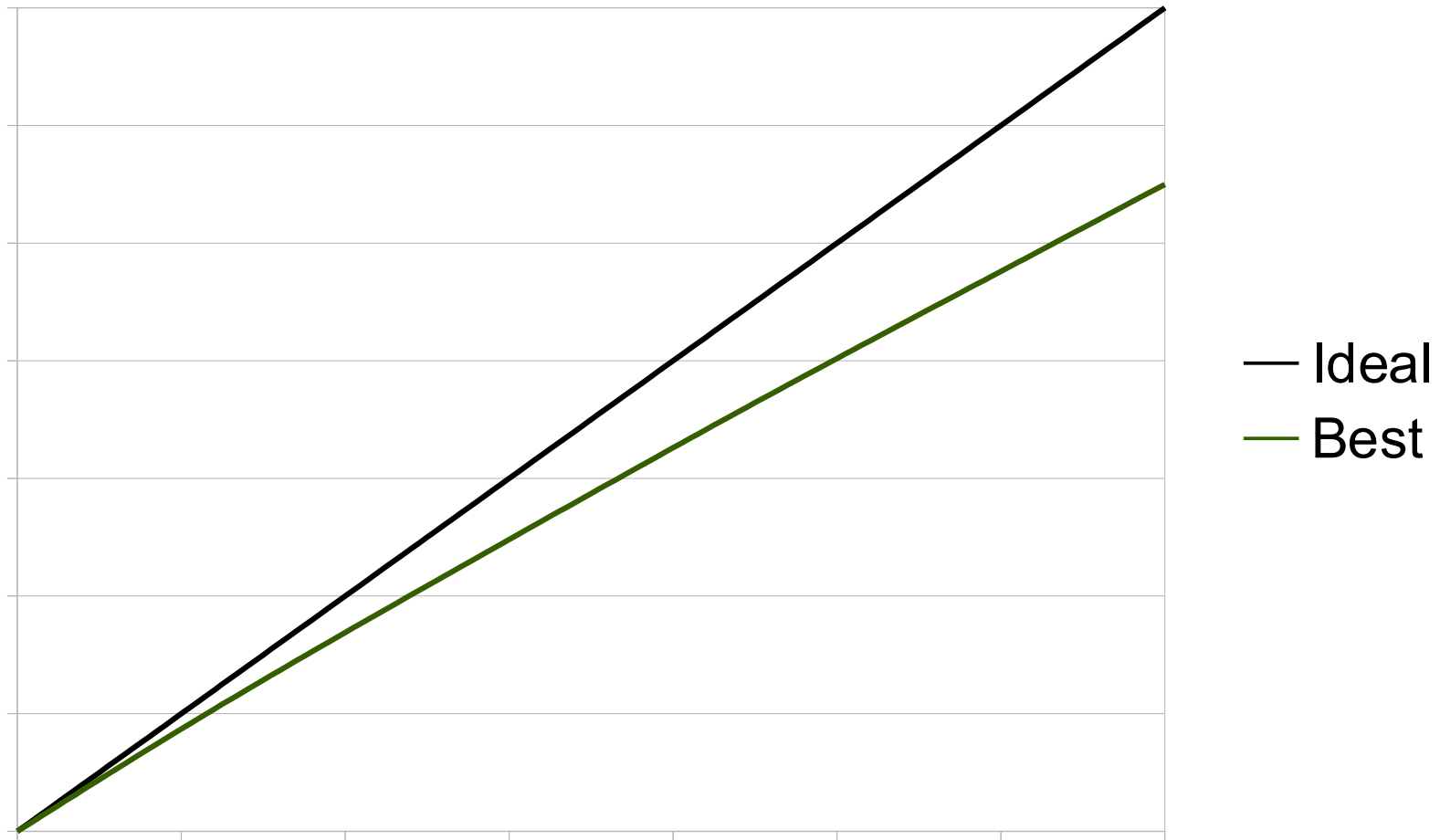


— Ideal

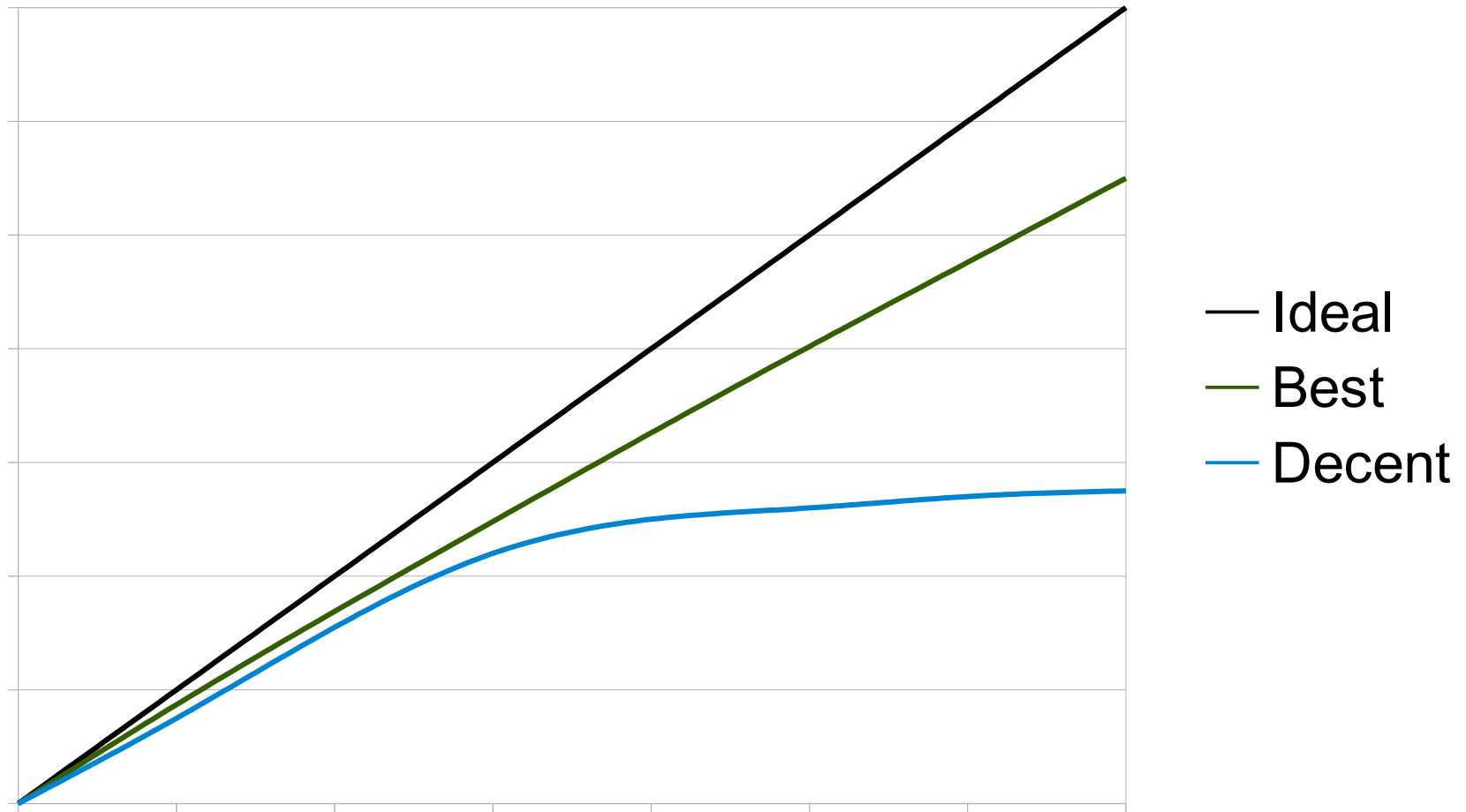


# Ideal SMP

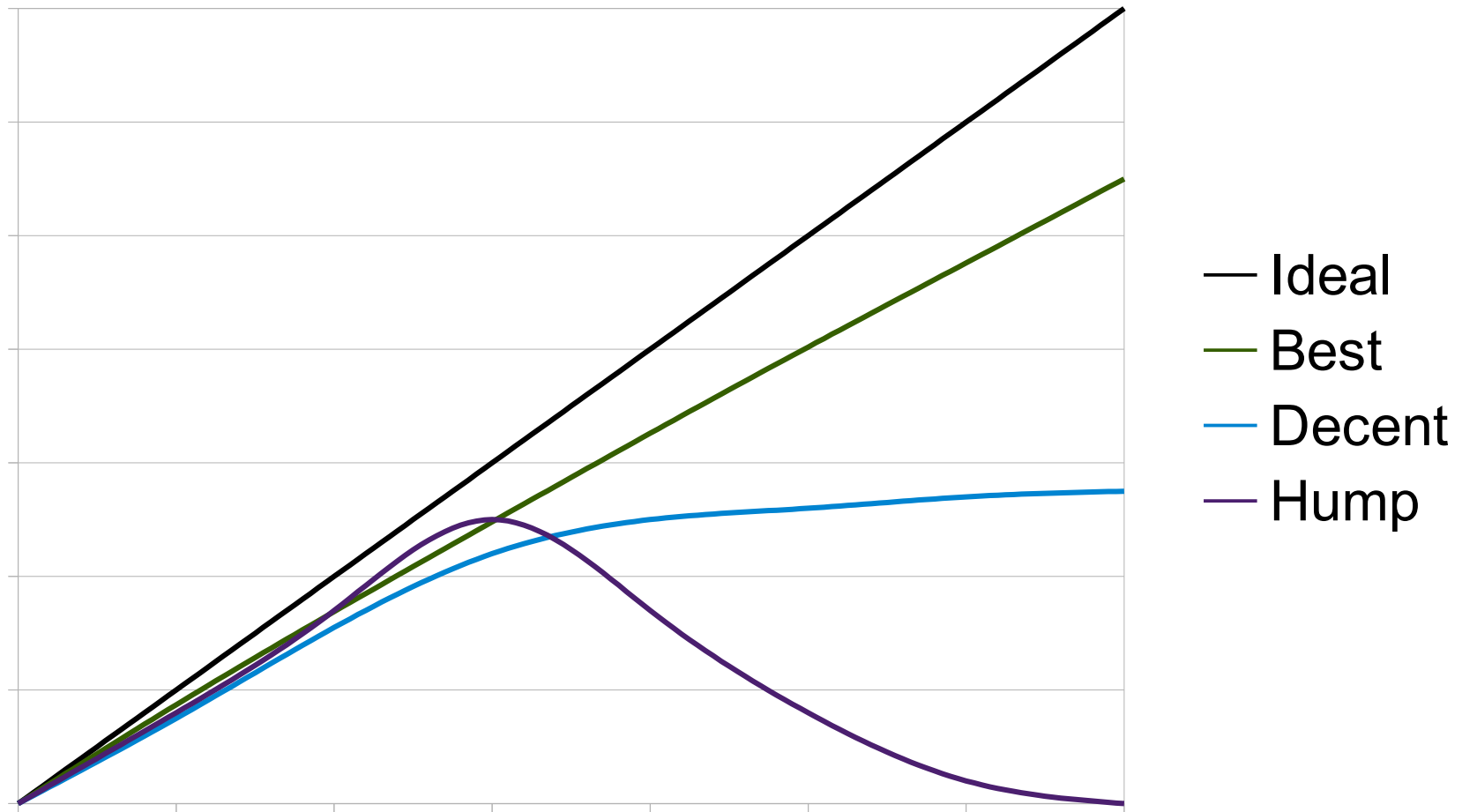
---



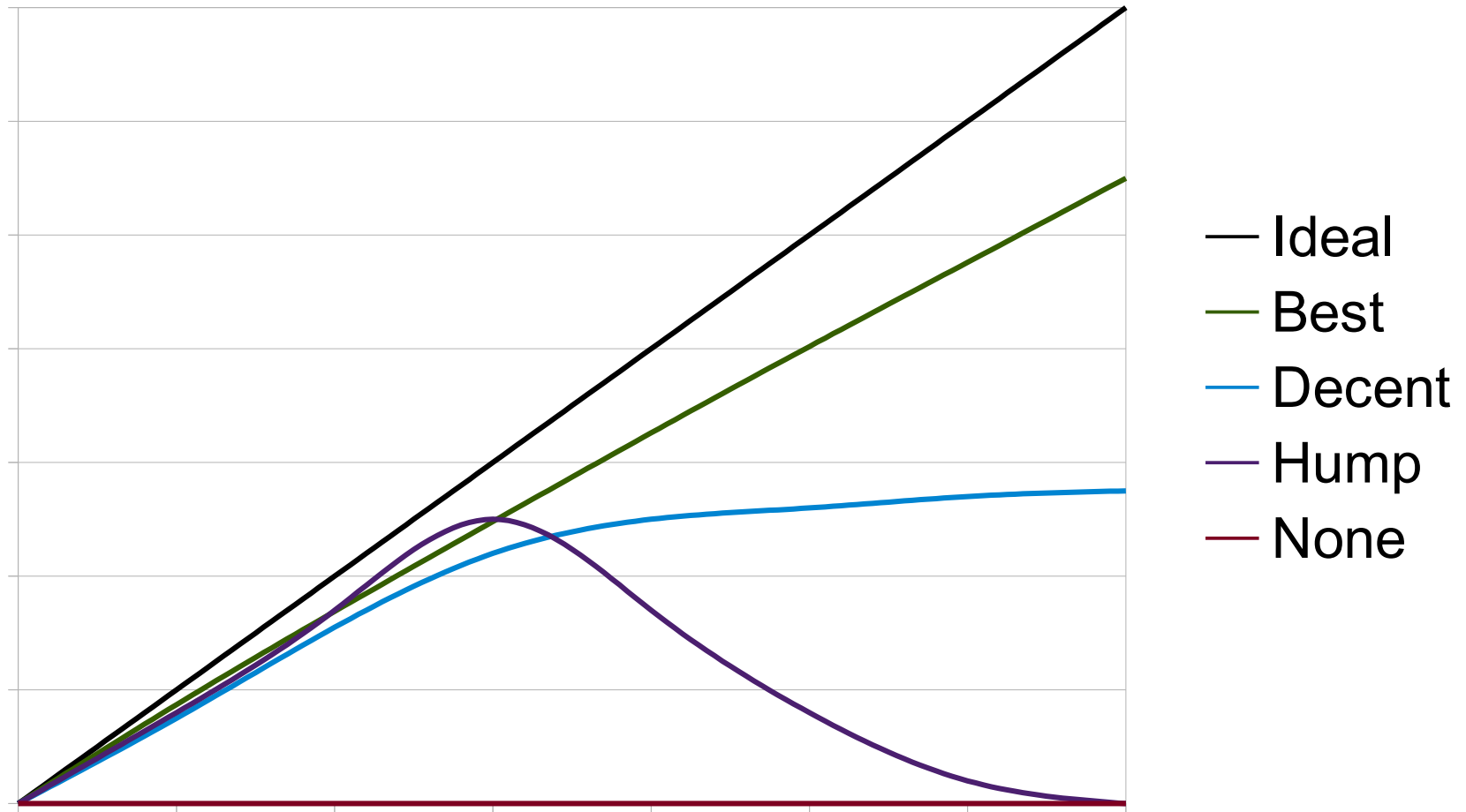
# Ideal SMP



# Ideal SMP



# Ideal SMP



# Why is Scaling Hard?

---

- N CPUs should do N amount of work
- Shared Resources
  - Can only be changed by one CPU at a time
  - Multiple CPUs have to take turns (“synchronize”)
- Examples
  - Devices
  - TCP Connections
  - TTYs



# Old Problem

---

- Signal handlers in userland
  - Limited ability (sigaction(2) list)
  - Threads can mask handlers
- Interrupts in traditional UP kernels
  - Limited ability (not able to block)
  - “Top-half” masked interrupts
  - spl(9) API in BSD and FreeBSD < 5





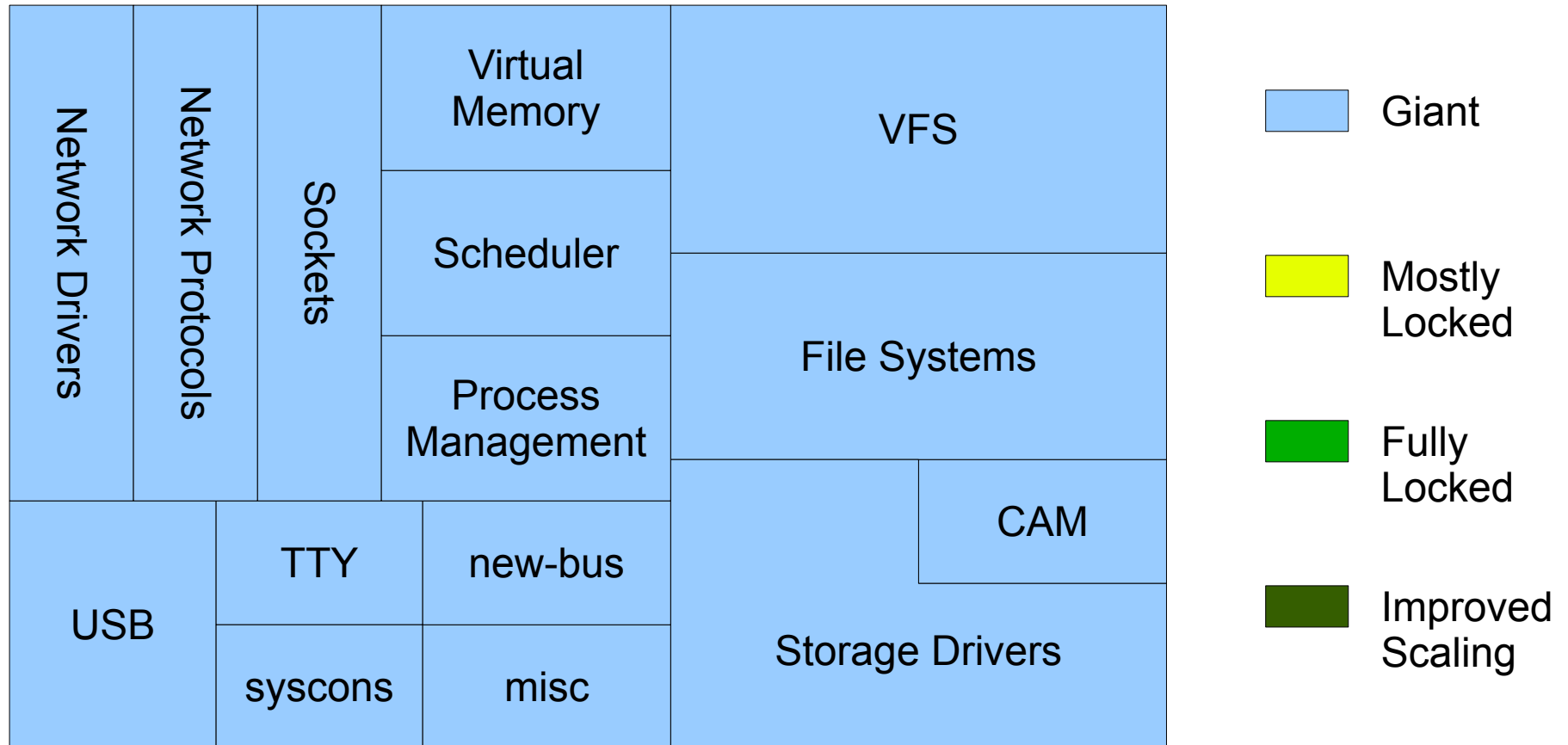
# SMP: New Wrinkle

---

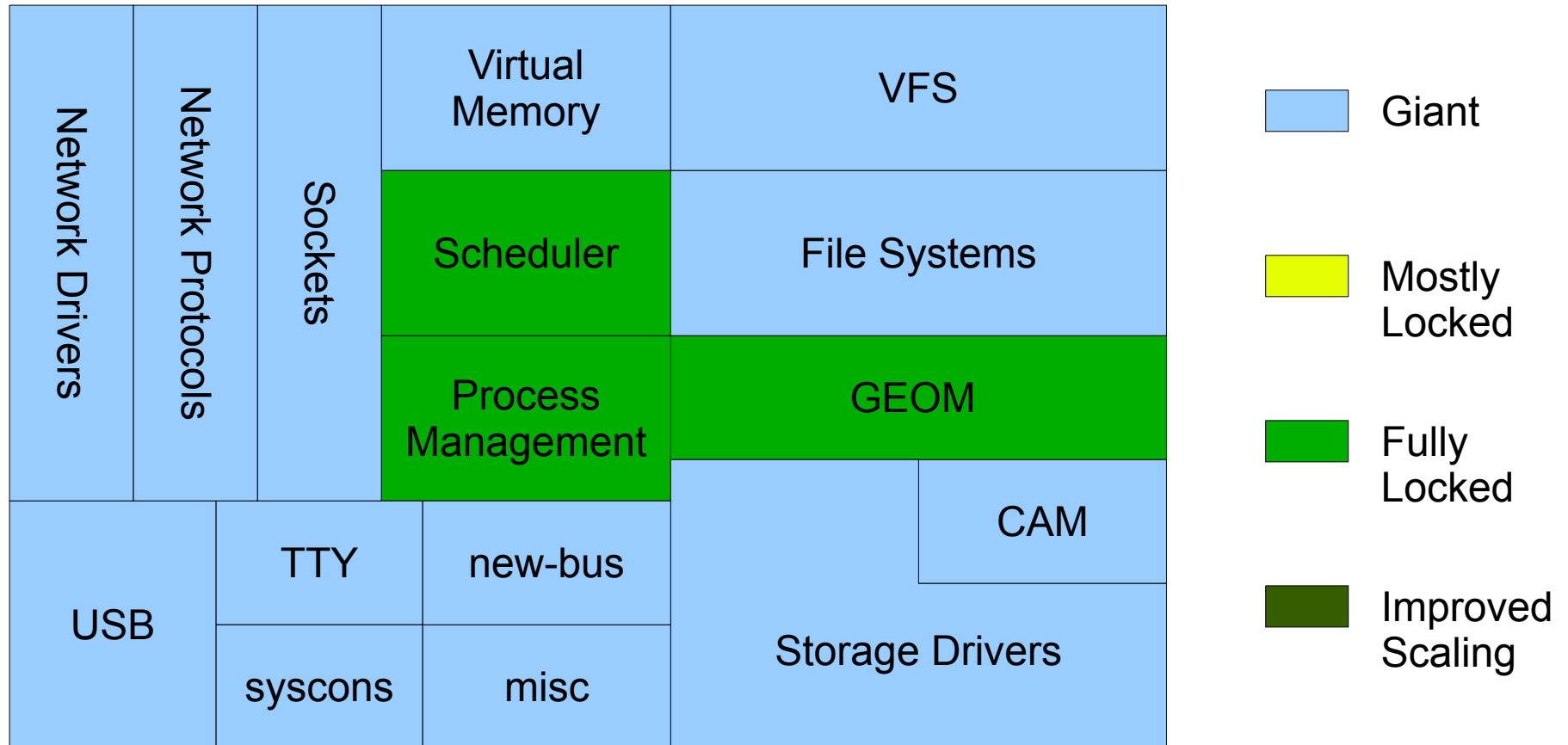
- Adding threads to a userland application requires additional synchronization (locking)
- SMP kernels require locking as well
- Improving scalability is an iterative process of identifying bottlenecks and improving them
- SMPng is a project to replace a “Giant” lock around the entire kernel with “smaller” locks



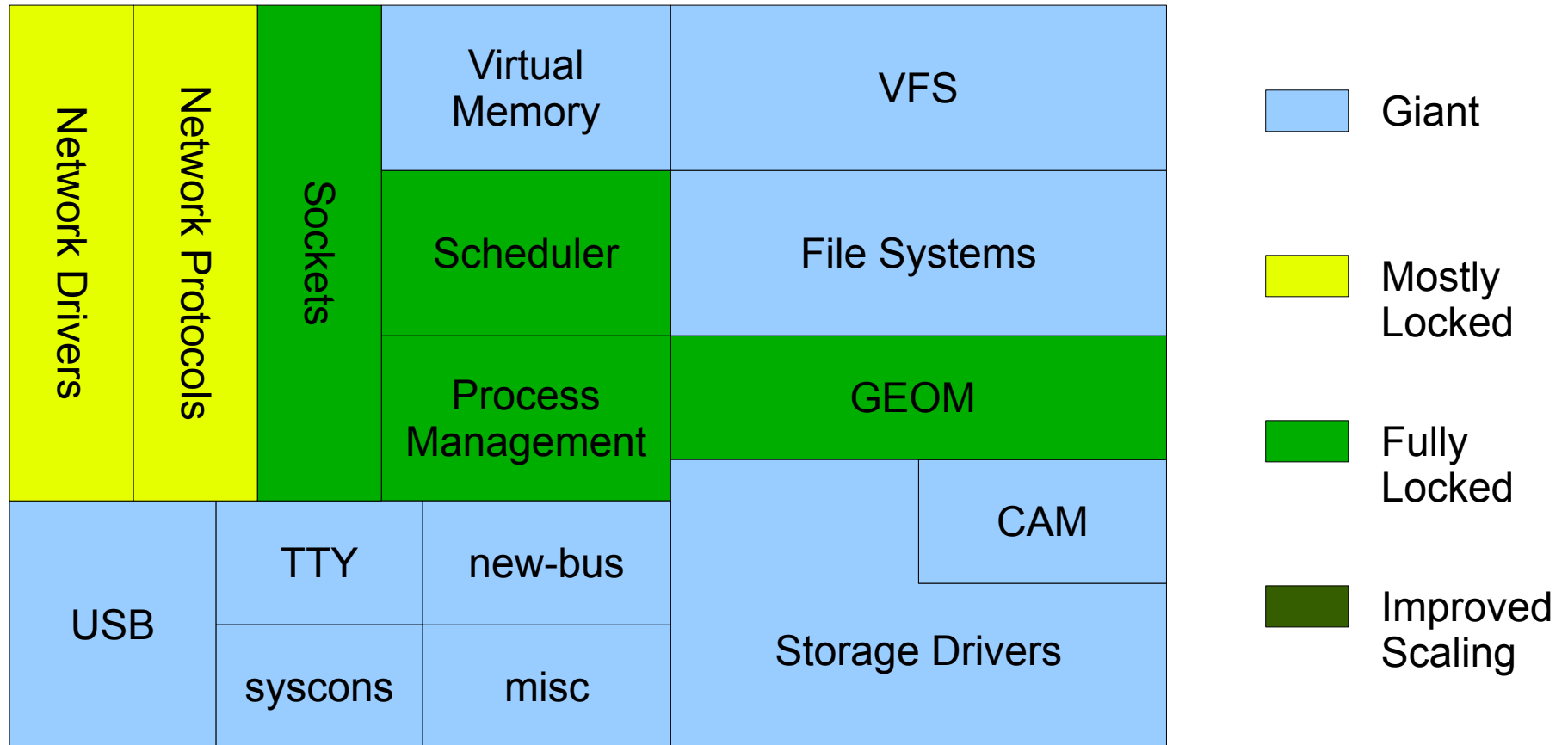
# FreeBSD 3.0



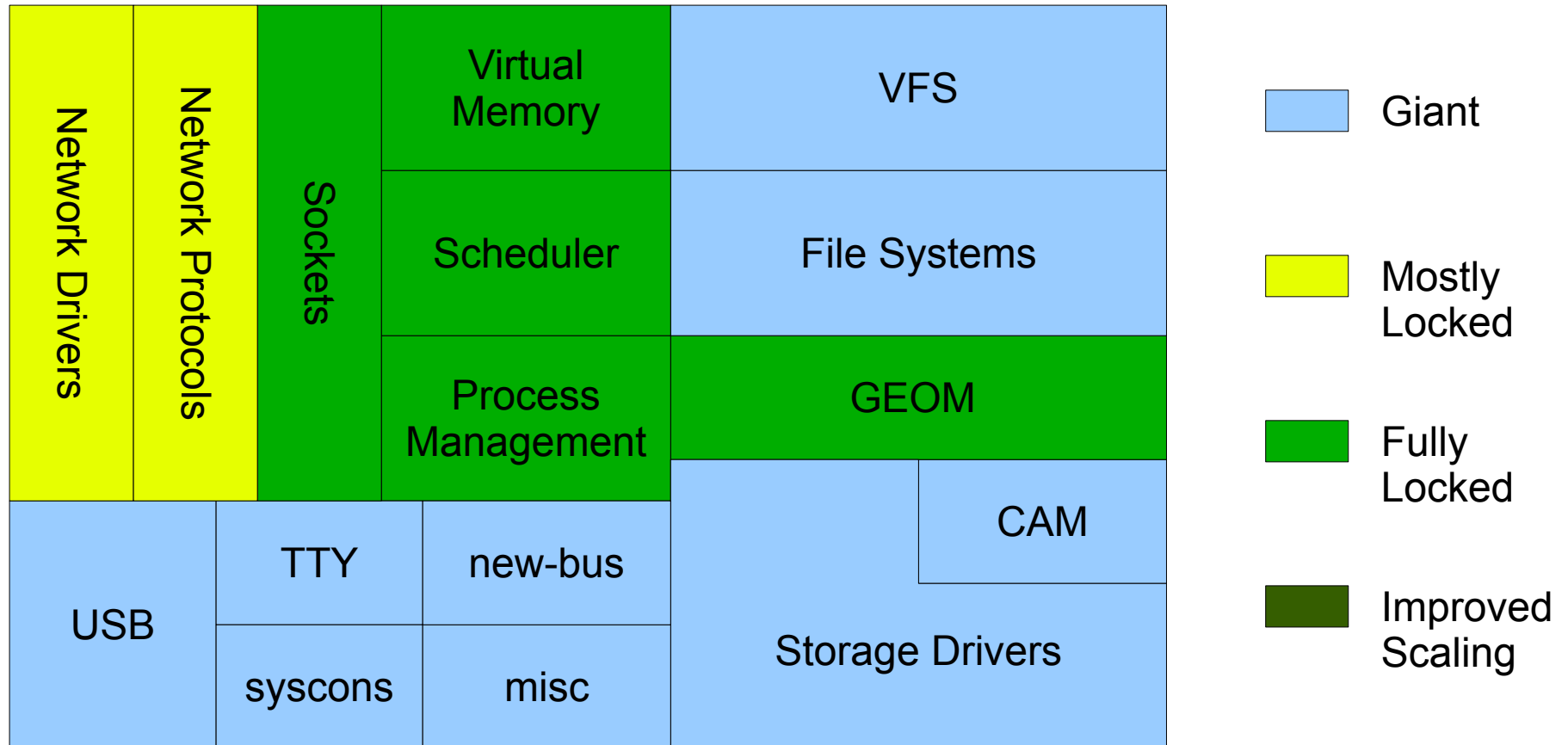
# FreeBSD 5.0



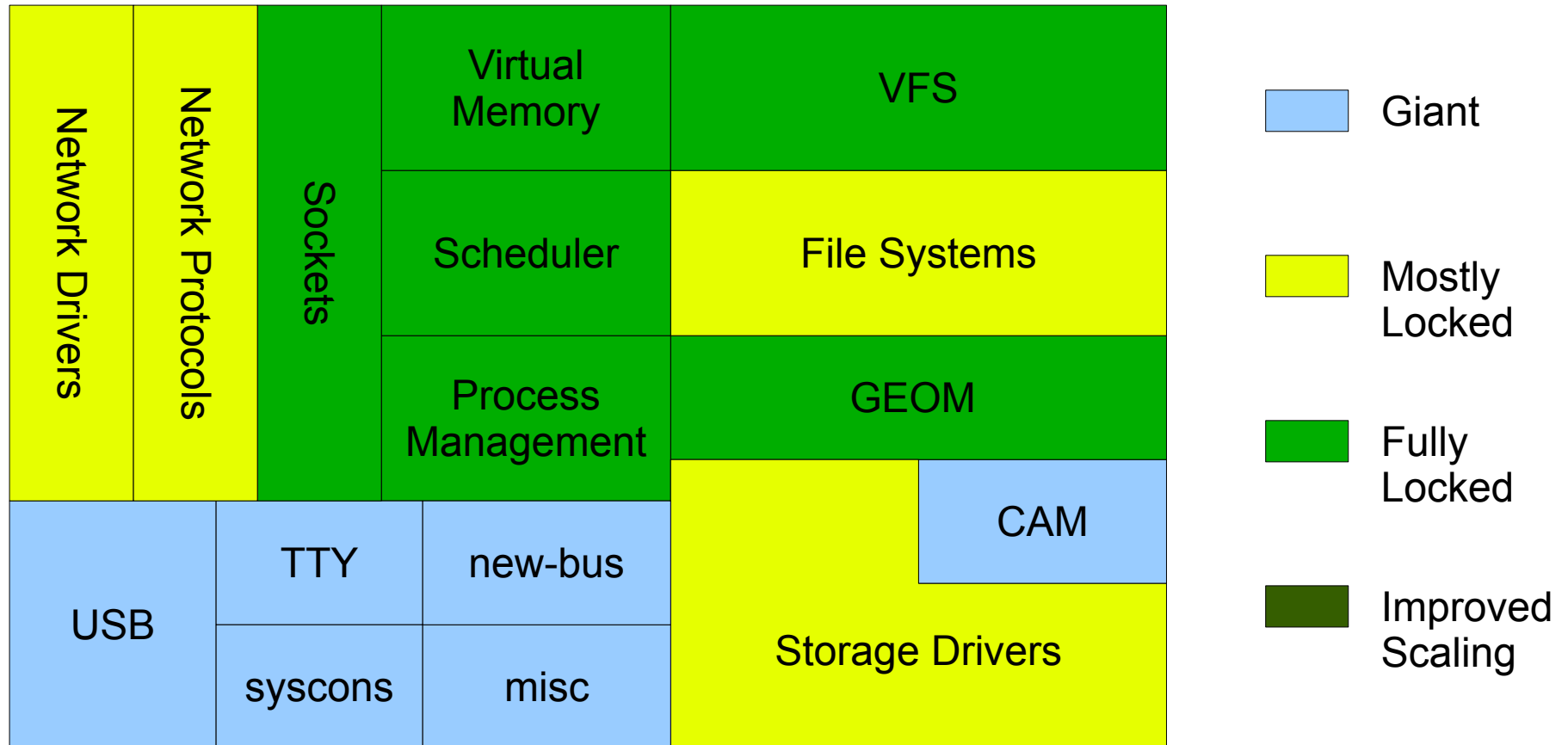
# FreeBSD 5.3



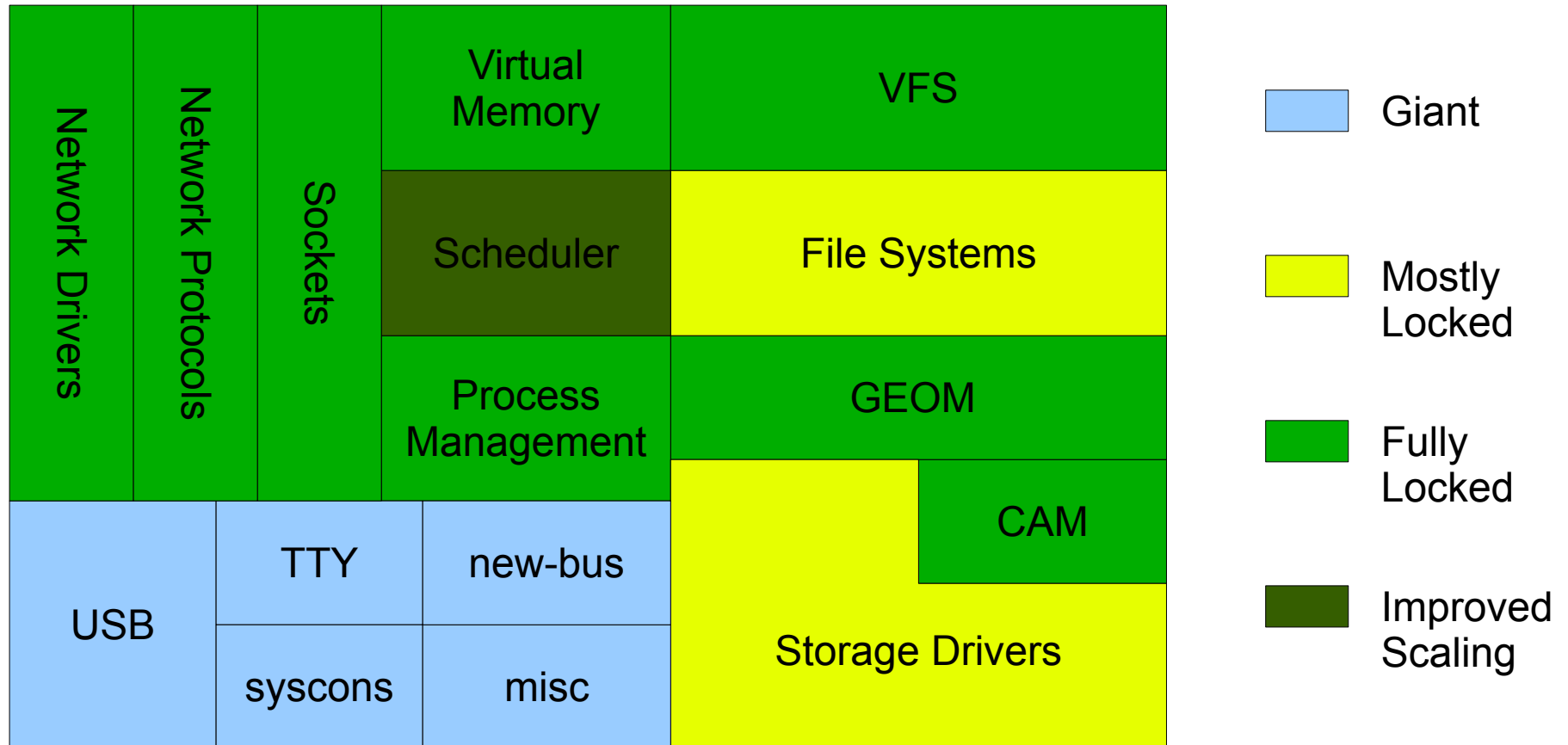
# FreeBSD 5.4



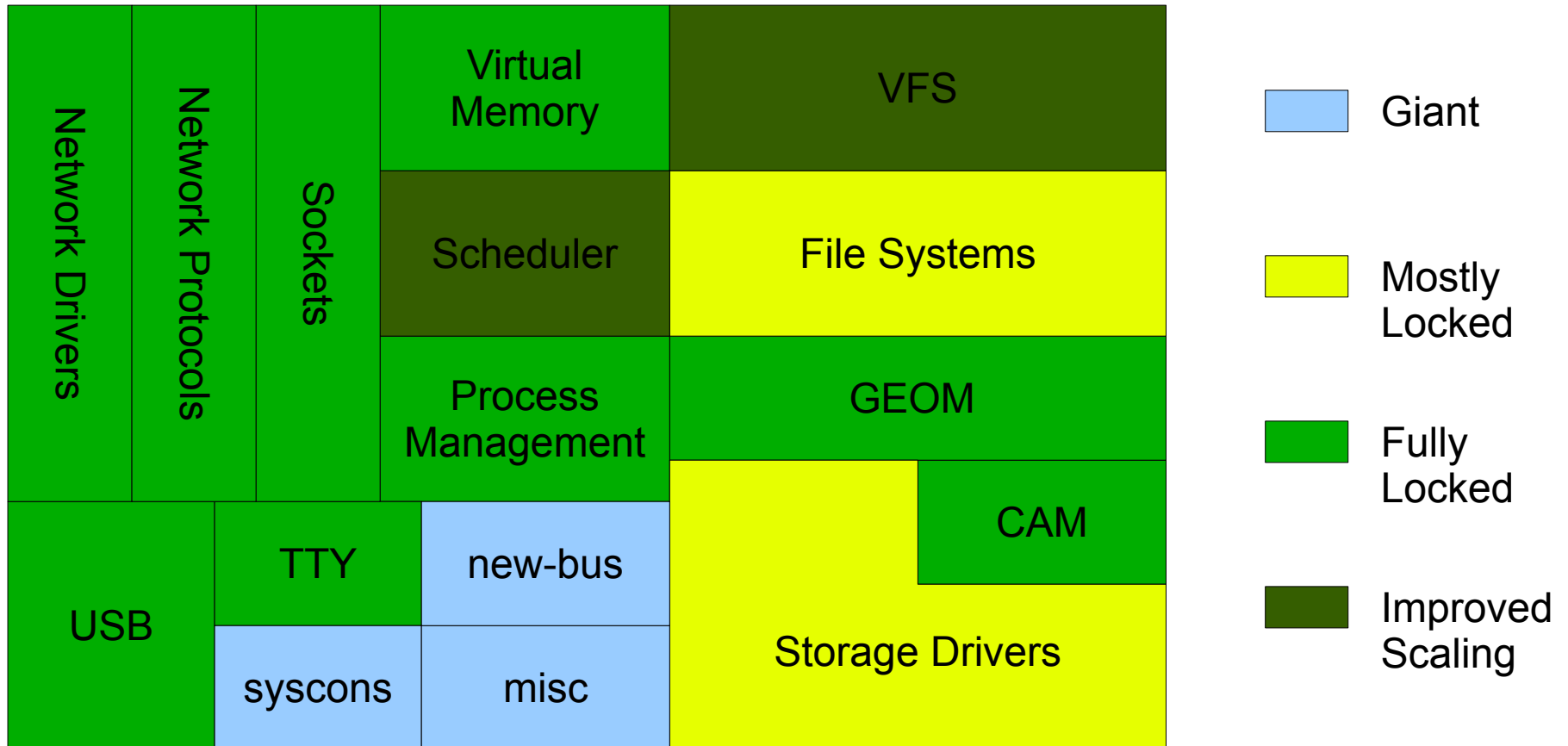
# FreeBSD 6.0



# FreeBSD 7.0

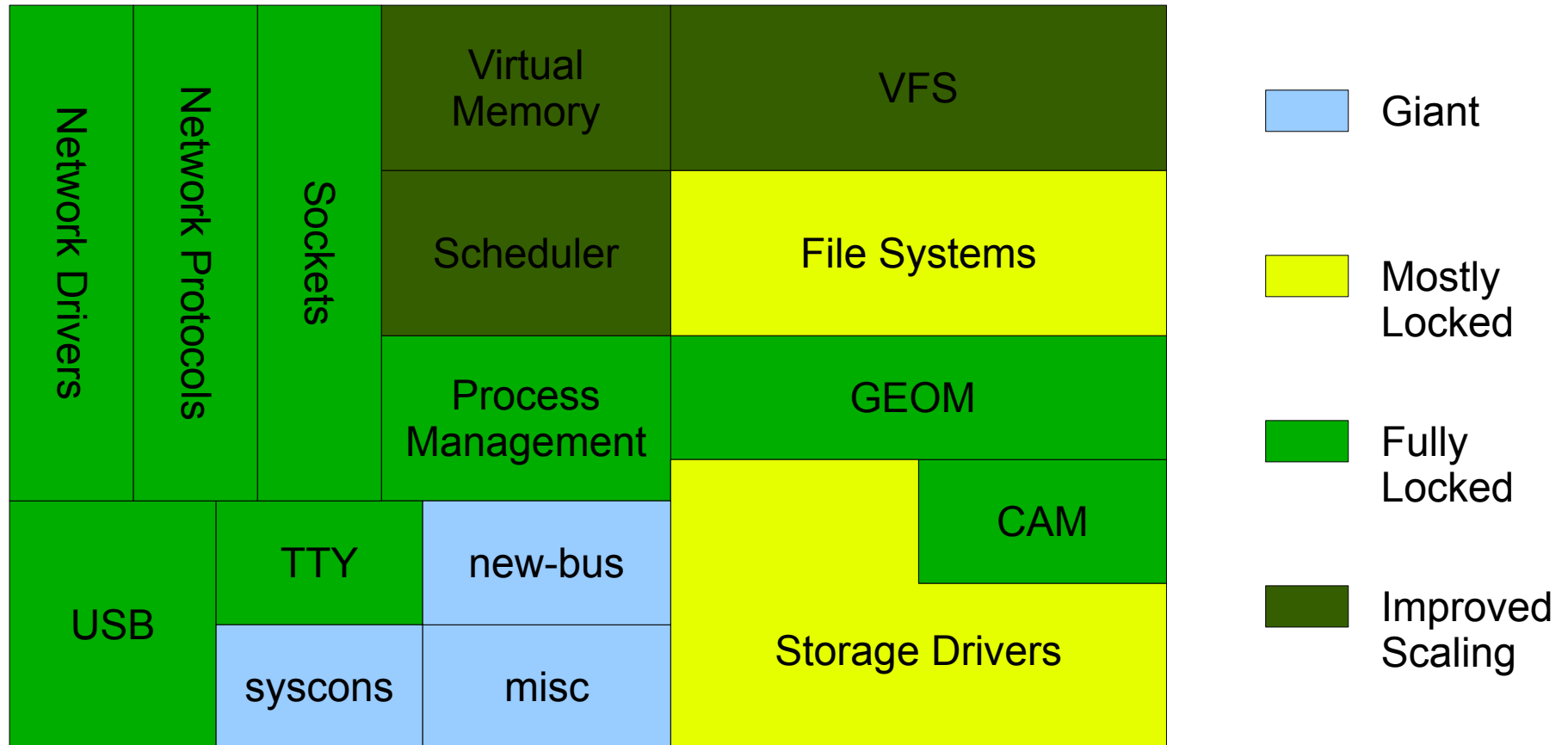


# FreeBSD 8.0

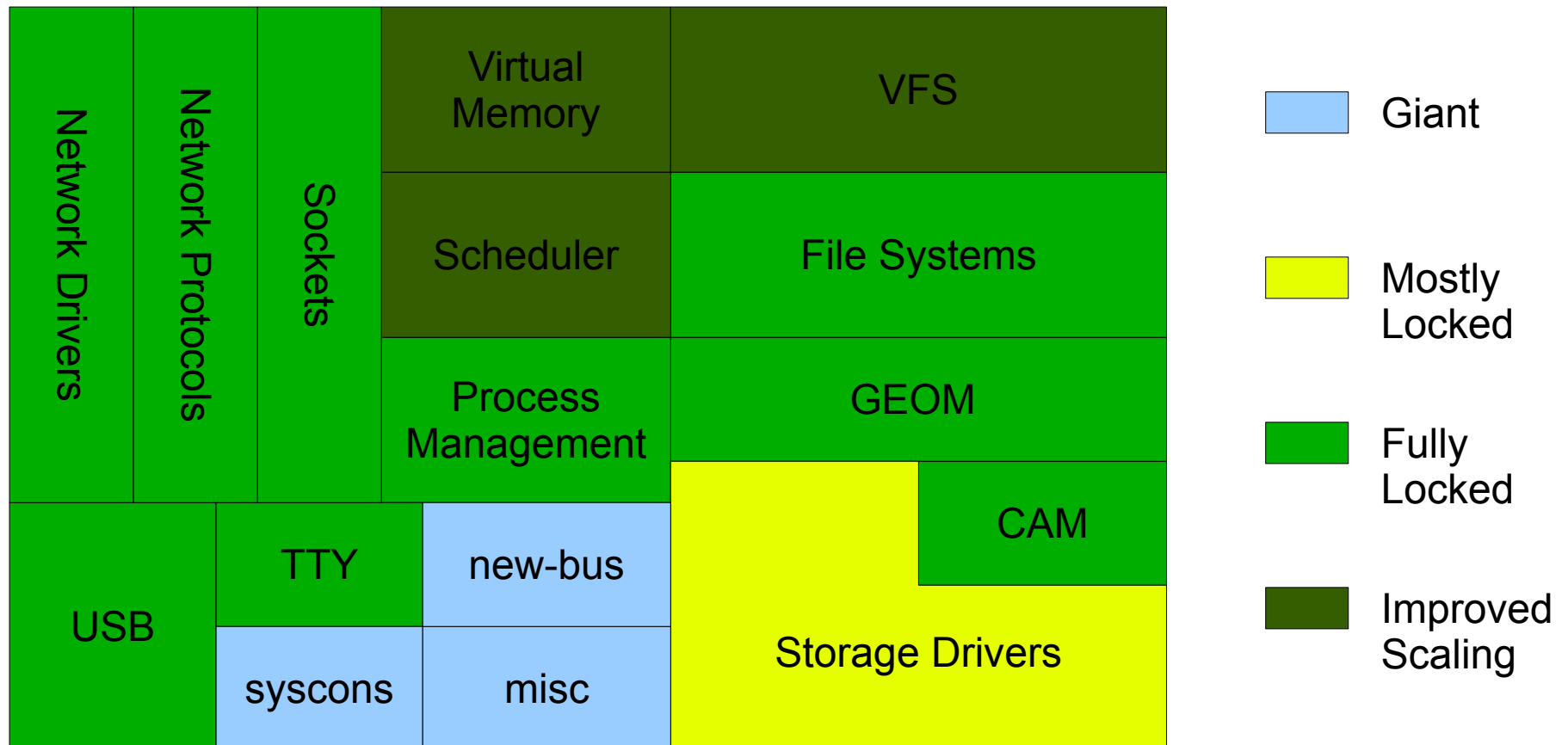




# FreeBSD 9.0



# FreeBSD 10.0



# Remaining Giant Uses

---

- Boot Time Initialization
- Suspend/Resume
- Module Event Handlers
- new-bus
- Some Storage Drivers (aha(4), dpt(4))
- syscons
- Miscellaneous (e.g., certain non-trivial sysctls)



# Hardware Tangent

---

- SATA NCQ (previously only for SCSI)
- Multiple RX/TX Queues on NICs
  - Nearly mandatory for 10G
- X86 Memory Controllers Moved on Die



# Finally

---

- <http://www.freebsd.org/~jhb/papers/smp/>
- Questions?

